



保 鎰 精 機 股 份 有 限 公 司  
BAO YI MACHINERY INDUSTRY CO.,LTD.

TEL : 886-5-2691232

FAX : 886-5-2698785

E-mail : [ccm2567@gmail.com](mailto:ccm2567@gmail.com)

No.63,Feng Tian Rd, Jiaxing St.,Dapi Township, Yunlin County 631, Taiwan(R.O.C)

- CAD設計  
CAD DESIGN
- CAM製造  
CAM MANUFACTURING
- CNC加工  
CNC PROCESSING
- 逆向工程  
REVERSE-ENGINEERING
- 模具製作加工  
MOLD MANUFACTURE PROCESSING
- 中高溫爐設計製造  
MEDIUM AND HIGH TEMPERATURE FURNACE DESIGN AND MANUFACTURING

# 機台設備 – Equipment of Machine



# 機台設備 – Equipment of Machine



# 檢驗設備 – Equipment of Testing



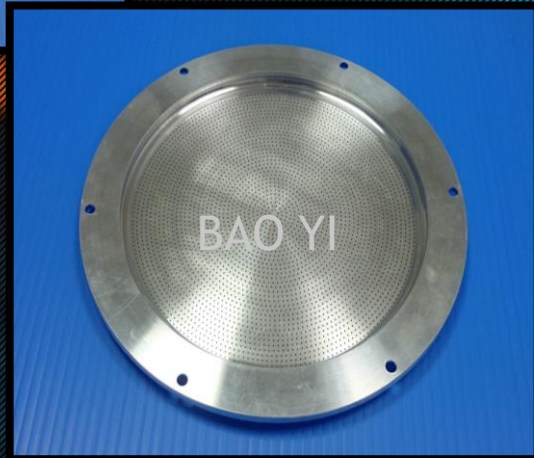
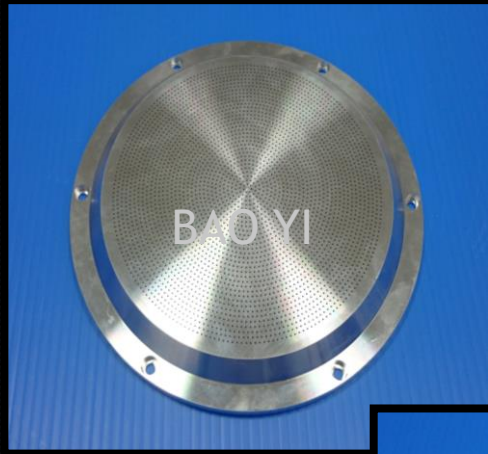
## 產品介紹 - Introduction of Product

- Novellus Shower Head
- 無塵精密烘箱 – Conventional Baking Oven
- 碳纖維設備 – Equipment of Carbon Fiber
- 半導體加工 – Semiconductor Processing
- 烘箱設備 – Equipment of Baking Oven
- 捲取設備 – Equipment of Coiler Machine
- 其他 – Others

# Novellus Shower Head

- 6 inch
- 9 inch
- 13 inch
- 15 inch
- #9070

# CVD-200mm Novellus Shower Head 6 inch



Part's No	
Material	Aluminum AL6061
Maker	Bao Yi
Diameter	∅
Width	
Holes Q'ty	
Holes Size	∅
Treatment	
Process	

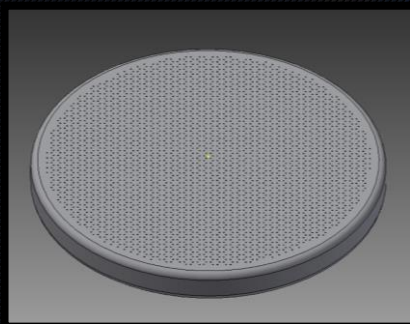
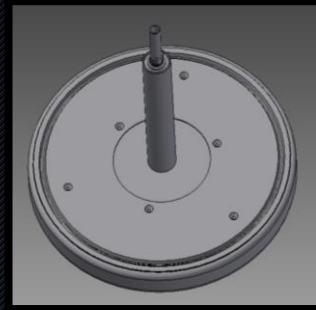


# CVD-200mm Novellus Shower Head 9 inch



Part's No	16-033931-00
Material	Aluminum AL6061
Maker	Bao Yi
Diameter	ø229.11
Width	20.65
Holes Q'ty	1715ea
Holes Size	ø1.02
Treatment	Bare
Process	CVD

# CVD-200mm Novellus Shower Head 13 inch



Part's No	16-271392-00
Material	Aluminum AL6061
Maker	Bao Yi
Diameter	Ø330.2
Width	31.75
Holes Q'ty	3292ea
Holes Size	Ø1
Treatment	Bare
Process	CVD

# CVD-200mm Novellus Shower Head 15 inch



Part's No	16-132590-00
Material	Aluminum AL6061
Maker	Bao Yi
Diameter	ø381
Width	31.75
Holes Q'ty	3894
Holes Size	ø1
Treatment	Chemical Polishing
Process	CVD

# 無塵精密烘箱 – Conventional Baking Oven



# 無塵精密烘箱 – Conventional Baking Oven



# 碳纖維設備 – Equipment of Carbon Fiber

緯紗燒成爐-300°C



緯紗機



# 碳纖維設備 – Equipment of Carbon Fiber

緯紗張力機



緯紗取出機



# 烘箱設備 – Equipment of Baking Oven

190型烘布機



熱定型機





# 捲取設備 – Equipment of Coiler Machine

110錠捲取機



E級布捲布機



# 其他 – Others

自動太空袋壓實機



預浸機



# 其他 – Others

供管機



移動式紗架



The background features a dark, starry night sky. A prominent blue nebula with a fine, grid-like texture is centered in the upper half. Scattered throughout are numerous orange and yellow bokeh lights of varying sizes, creating a sense of depth and light. The overall color palette is dominated by deep blues, oranges, and blacks.

**THANK YOU FOR LISTENING**